

AUTOMOTIVE GLASS WINDOW SHAPE CONTROL

MEASUREMENTS OF GLASS SHAPE

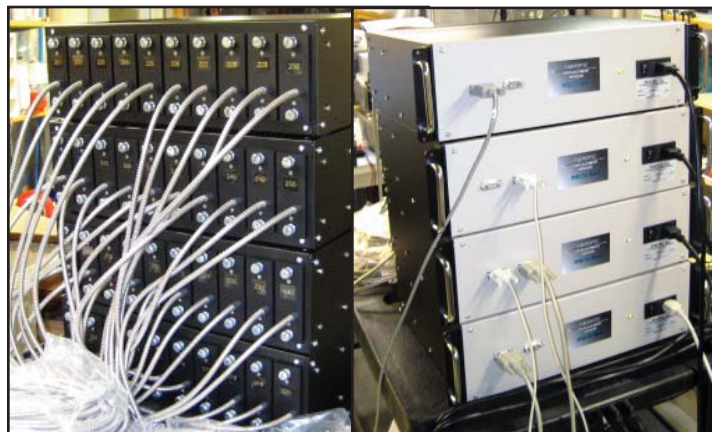
40 This month we delivered 40 model mcDMS-RC171-C1ET1 sensors in 10DMS racks to a manufacturer of auto glass windows. These are used to check the shape of windows in production. This application was first highlighted in our E-Newsletter of August 2005:

<http://www.philtec.com/ENEWS050805Glass.pdf>



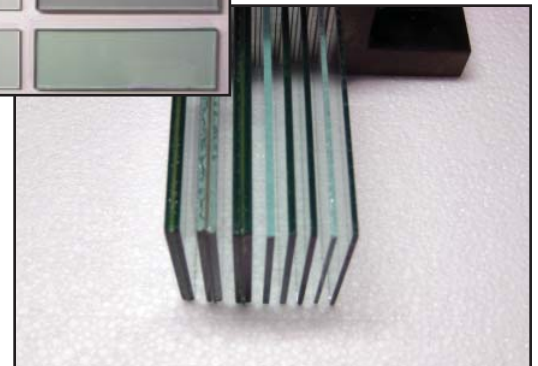
210 We have delivered a total of 21 racks and 210 sensors for this application. LVDT's have been traditionally used to gage window shape. The problem with LVDT's is that they can move the glass window when they make contact, shift the glass position, and thereby create measurement errors.

Philtec's non-contact fiberoptic probes have solved the problem, and they have been incorporated into the customer's factory gaging process.



Calibrations To Window Glass

Every Philtec sensor has to be calibrated to each type glass in production. Glasses used in this project have included clear glass, green tinted glass and laminated glass, ranging from 1.6 mm to 5 mm thick.



PHILTEC

www.philtec.com

Fiberoptic Sensors for the Measurement of Distance, Displacement and Vibration